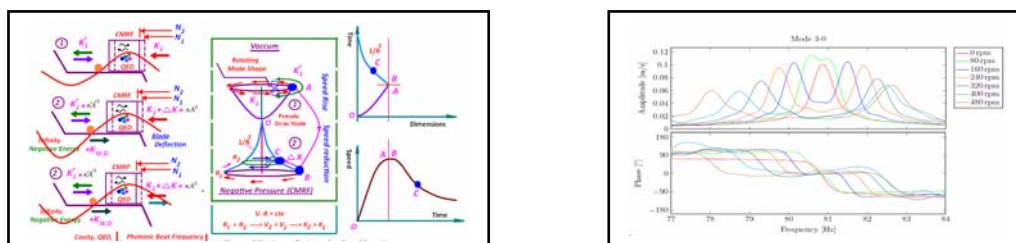


Warp Drive Hydro Model For Interactions Between Hydrogen and Nickel

Farzan Amini
ISCMNS , IRAN
fnamini@aol.com

The Model of Warp Drive Hydro (WDH) Turbine have been applied to study about the interaction between hydrogen and crystal lattice of nickel. WDH is used for the required propulsion in order to the motion of plasma particles and hydrogen atoms inside the specific medium. The effects of infinity can be studied in hyperbolic model. A Weierstrass model has been implemented on the specific runner (disc model) of rotary machine. The jet plasma implanted on the blade can behave like infinitesimal size particles in the crystal lattice of nickel metal. The pre-twisted blade is placed in the geometric model and affects on the torque fluctuation of blade and generation of shear stress ,contraction and expansion for the parts of blade surface during passing rotating mode shape. The beat acoustic frequency caused by rotating mode shape on the runner act as an anharmonic force on the crystal lattice of blade[1]. The negative energy inside the crystal lattices and motion of mode shape generate a virtual warp drive for the motion of plasma bunch. Such warp drive goes through the conduit between two adjacent lattices at ZPE and or CMRF at vacuum mediums. The pairing process between protons and electrons can occur inside the thermo-acoustic. The acoustic wave can help to quantize the particles energy. If this phenomena occur in this acoustic wave, the cold particles will be placed in the low level. QED and Rydberg state of hydrogen atom and as well the collapse of bubbles generate the photons and luminescence. The beat photonic wave and the similar CMRF on the crystal lattice caused by stress on the SPR wave on the nickel and CMRF play a significant role in the main process. The charge's current density isn't zero at anharmonic wave and infinity. The cooling process can occur at helical spinning cone on the trailing edge and infinity, thus it is expected to make the specific condition. The capillary effect behaves as a tunnel at vacuum field under rotation. The speed rise and the motion of particles inside the tunnel can make the Coriolis effect. The Coriolis effect can form swirling while particle move towards the center of circle down in the low pressure zone and swirling motion can decrease temperature of particles and to cool them. Also, it generates the electromagnetic field and Z-pinch.

Rotating mode shape of runner and the spinning helical cone of trailing edge act like the standing wave[1]. The energy of infinitesimal particles as ether is stored in the standing wave of harmonic waves. Tractric path of spinning helical cone of trailing edge can generate the anharmonicity wave on the blade. Warp Drive can increase the velocity and Z-pinch of bunch plasma. The squeeze film levitation in the subspace caused by shear stress are influenced by the harmonic waves. The new instantaneous bonding between particles can make the new virtual atoms along with their reserved energy. In this case, there is possibility for the energy released by the contraction of the virtual atoms.



[1]P. Schmiechen, "Travelling Wave Speed Coincidence", Imperial College of Science, Technology and Medicine, University of London, May 1997.